

MONTHLY MEMBERSHIP PROGRESS REPORT

LOCATION MAINE

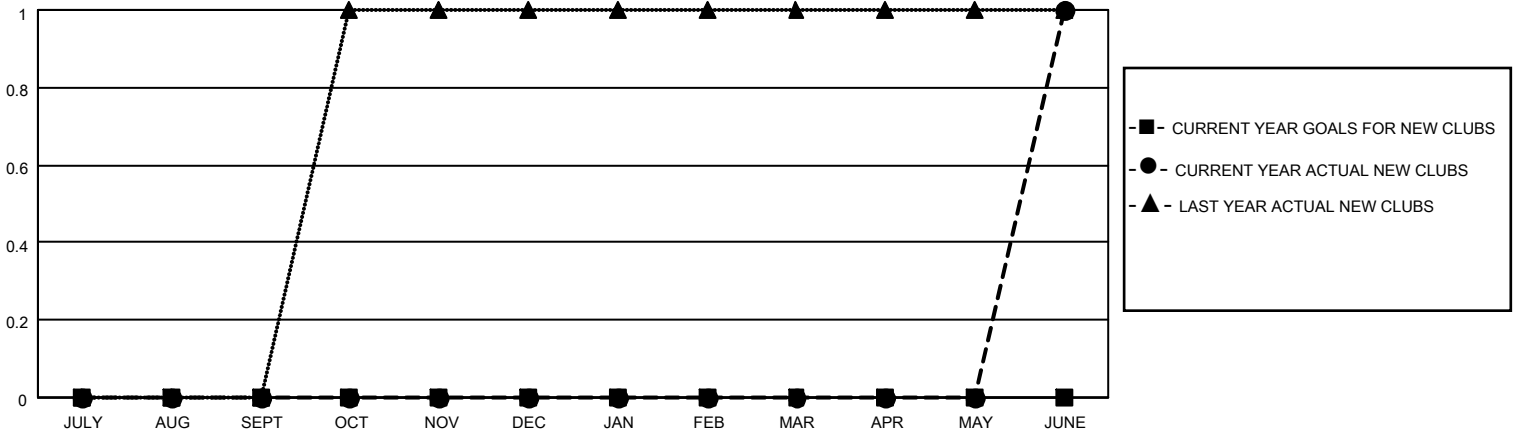
District 41

Results as of: 6/30/2021

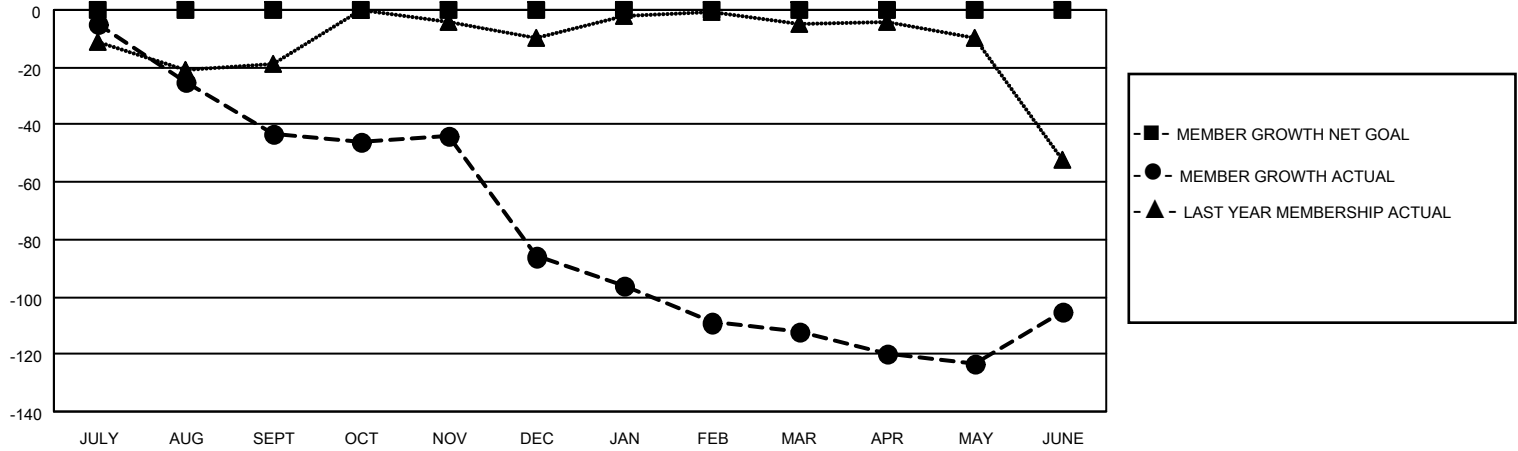
Clubs			
RESULTS FOR 2020-2021			
QUARTER	NEW CLUB GOAL	NEW CLUBS	DROPPED CLUBS
JULY/AUG/SEPT	0	0	0
OCT/NOV/DEC	0	0	1
JAN/FEB/MAR	0	0	1
APR/MAY/JUNE	0	1	0

Members			
RESULTS FOR 2020-2021			
QUARTER	MEMBER GROWTH NET GOAL	MEMBER GROWTH ACTUAL	DROPPED MEMBERS ACTUAL (including transfers)
JULY/AUG/SEPT	0	15	51
OCT/NOV/DEC	0	27	67
JAN/FEB/MAR	0	12	36
APR/MAY/JUNE	0	58	49

GOALS AND ACTUAL NEW CLUBS CUMULATIVE



GOALS AND ACTUAL MEMBERS CUMULATIVE



DROPPED CLUBS: 2	25 CLUBS OF 74 ADDED 1 OR MORE NEW MEMBERS	<u>GENDER DISTRIBUTION</u>
<u>DROPPED MEMBERS</u>	CLICK HERE FOR CUMULATIVE MEMBERSHIP DATA	MALE 1,284 (66.19%)
DECEASED 46		FEMALE 656 (33.81%)
CLUB CANCELLED 6		TOTAL FAMILY UNIT MEMBERS 451
OTHER 151		FAMILY MEMBERS PAYING HALF DUES 233
TOTAL 203		